

Windows Installation guide for SysOrb Agent

Copyright © 2010 Evaluesco A/S

Installation prerequisites

Download the appropriate SysOrb Agent installation package from either the www.evaluesco.com web-site, or the Evaluesco FTP site at ftp.evaluesco.com.

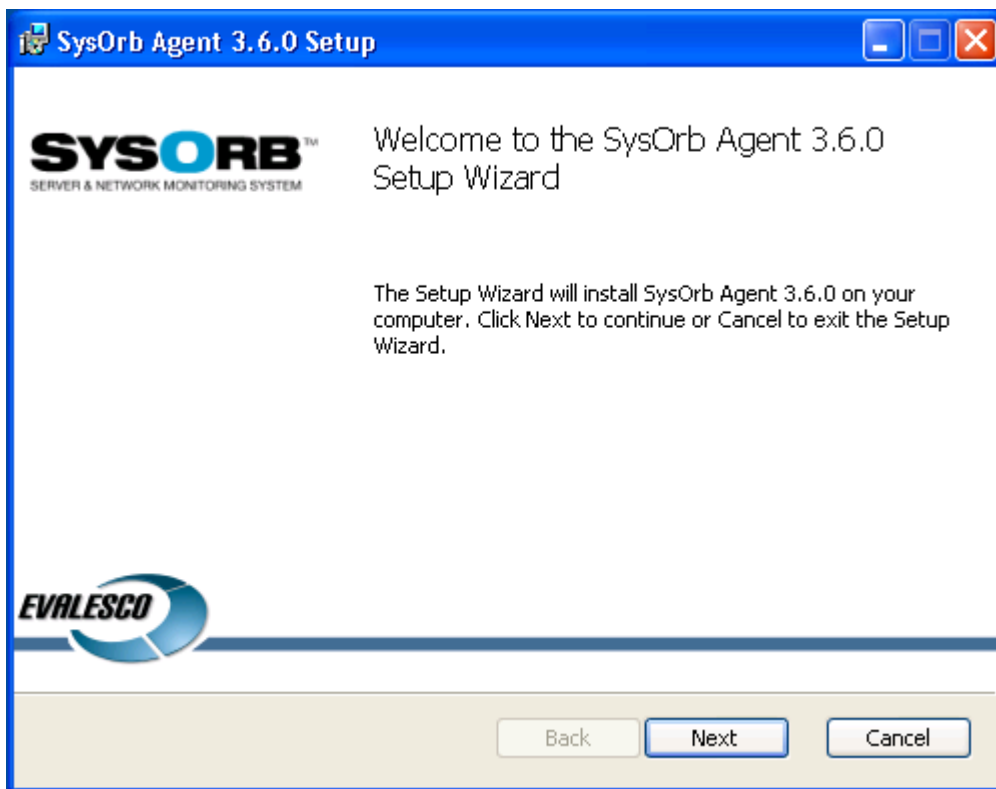
The filename of such a package should be `sysorb-agent-3.6.0-4769.winxp-x86.ia32.msi`. The "3.6.0" is the version of SysOrb, and the "4769" states the build number. The "winxp-x86.ia32" shows that the package is for 32 bit servers. For 64 bit servers it should be `sysorb-agent-3.6.0-4769.win2003-amd64.amd64.msi`.

If you are upgrading an existing SysOrb Agent installation from earlier than 3.6.0, the InstallShield Wizard will start by uninstalling the existing SysOrb agent when you execute the installation package. Follow the dialog boxes on-screen to properly uninstall. If you have manually stopped the SysOrb Agent service before starting the uninstallation, it is important that you close the Services window. Then, simply execute the package again, and it will follow the described installation procedure.

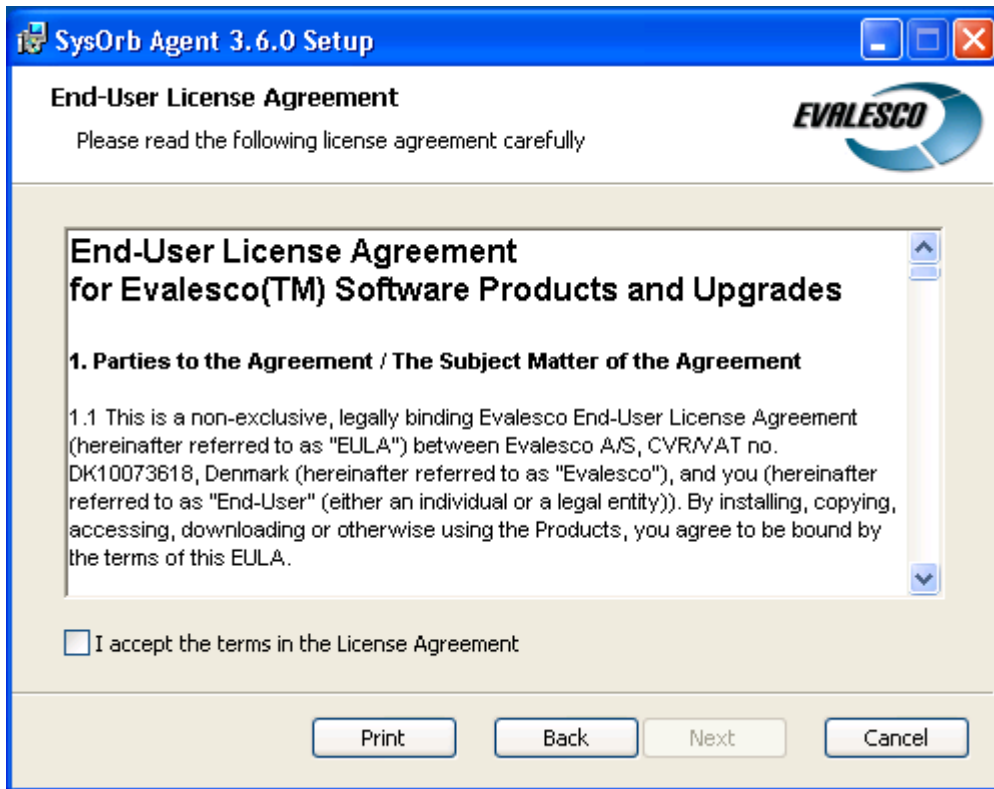
Please note: You will not be required to reboot the installation machine due to either installation or uninstallation of the SysOrb Agent.

Installing the SysOrb Agent

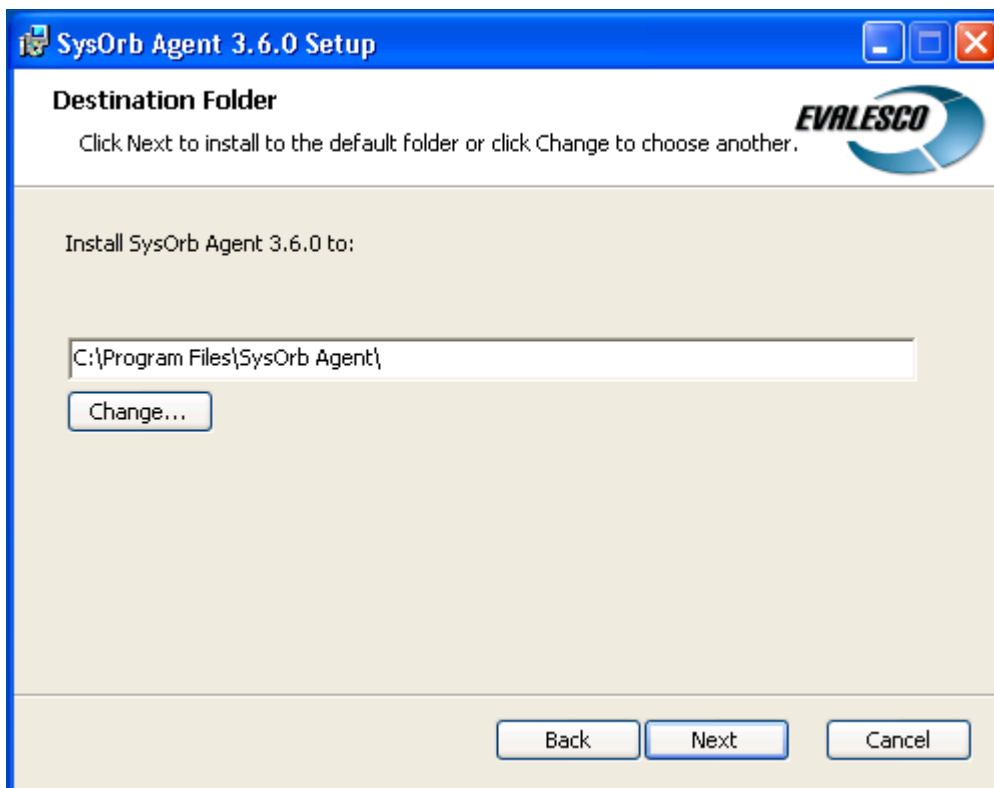
Start by starting the installation program. Once it is uncompressed, you will be presented with the following screen:



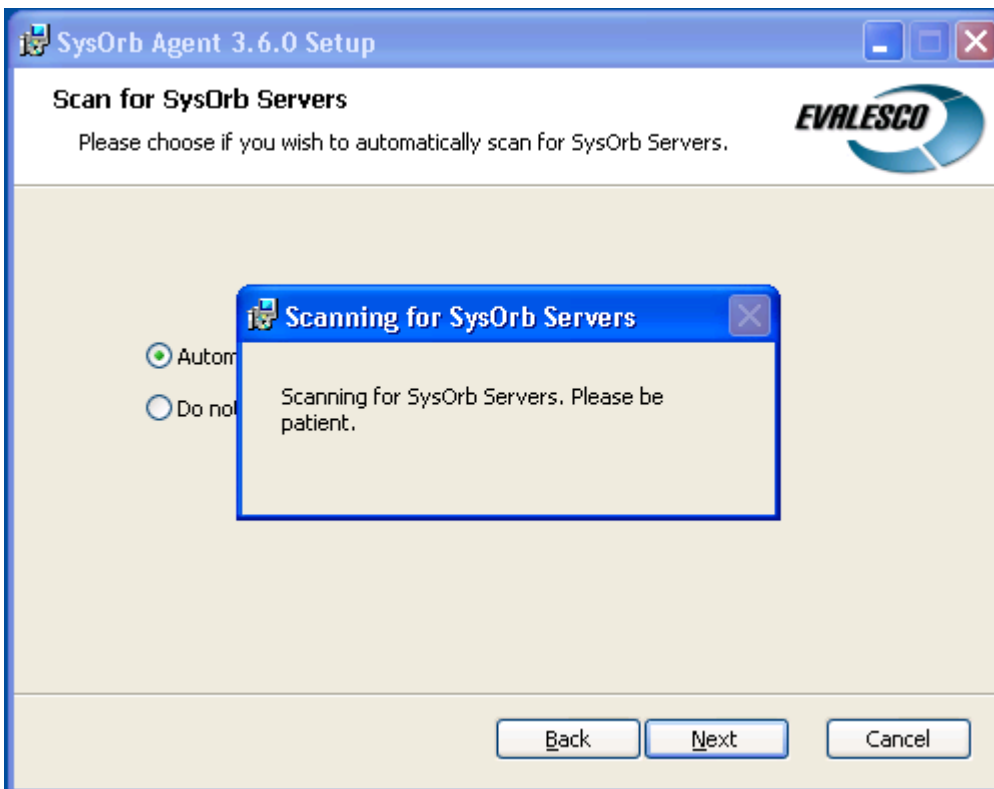
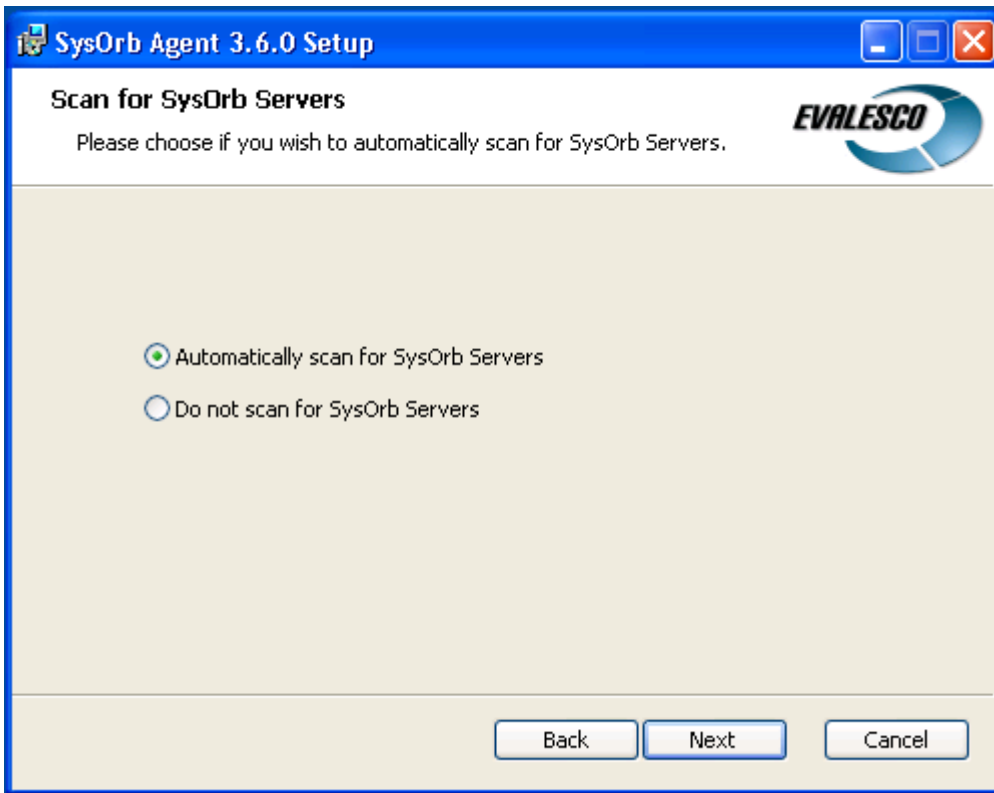
Click Next to begin the installation.

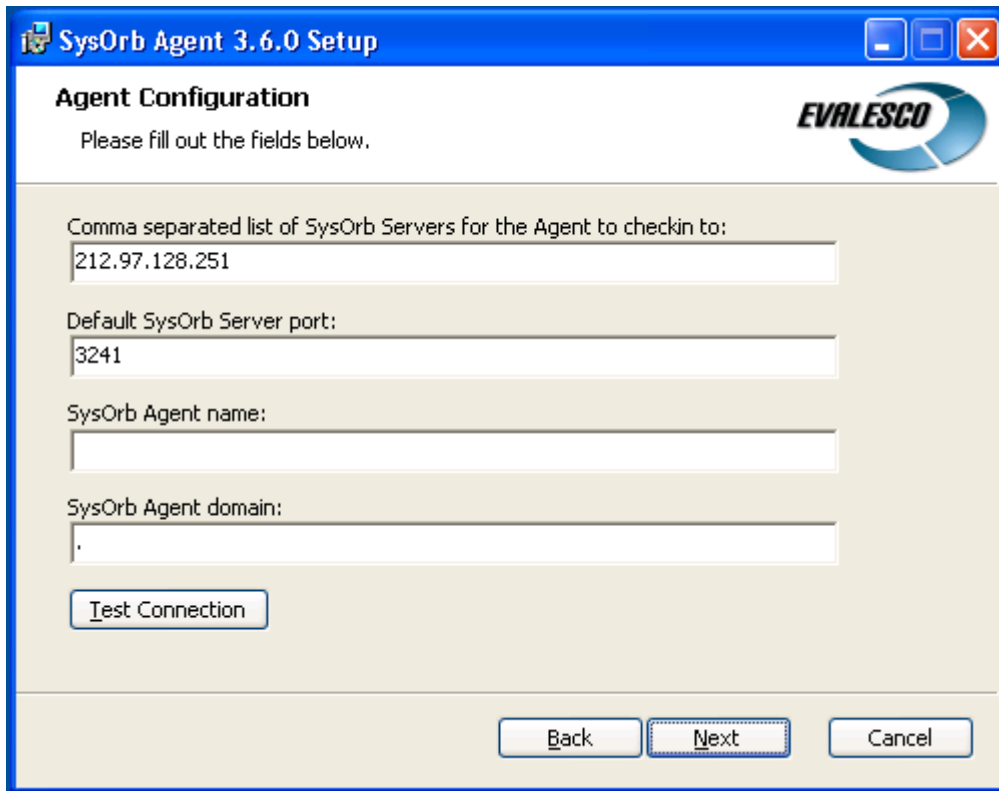


Read through the EULA, accept it and click Next.



Use Change if you wish to place the SysOrb Agent installation somewhere different than the default, and click Next when you are satisfied.





The screenshot shows a Windows-style dialog box titled "SysOrb Agent 3.6.0 Setup". The main heading is "Agent Configuration" with the instruction "Please fill out the fields below." and the EVALESCO logo. The form contains four text input fields: "Comma separated list of SysOrb Servers for the Agent to checkin to:" (containing "212.97.128.251"), "Default SysOrb Server port:" (containing "3241"), "SysOrb Agent name:" (empty), and "SysOrb Agent domain:" (containing "."). A "Test Connection" button is located below the domain field. At the bottom of the dialog are "Back", "Next", and "Cancel" buttons.

This screen allows you to configure some basic settings for the SysOrb Agent:

Comma separated list of SysOrb Servers for the Agent to checkin to:

Here you must specify the SysOrb Server that shall receive the information gathered by the Agent. That is either the DNS name or the IP-address of the machine running the SysOrb Server.

Default SysOrb Server port

Port 3241 is the IANA-registered port for SysOrb, so there should be little or no need to change this.

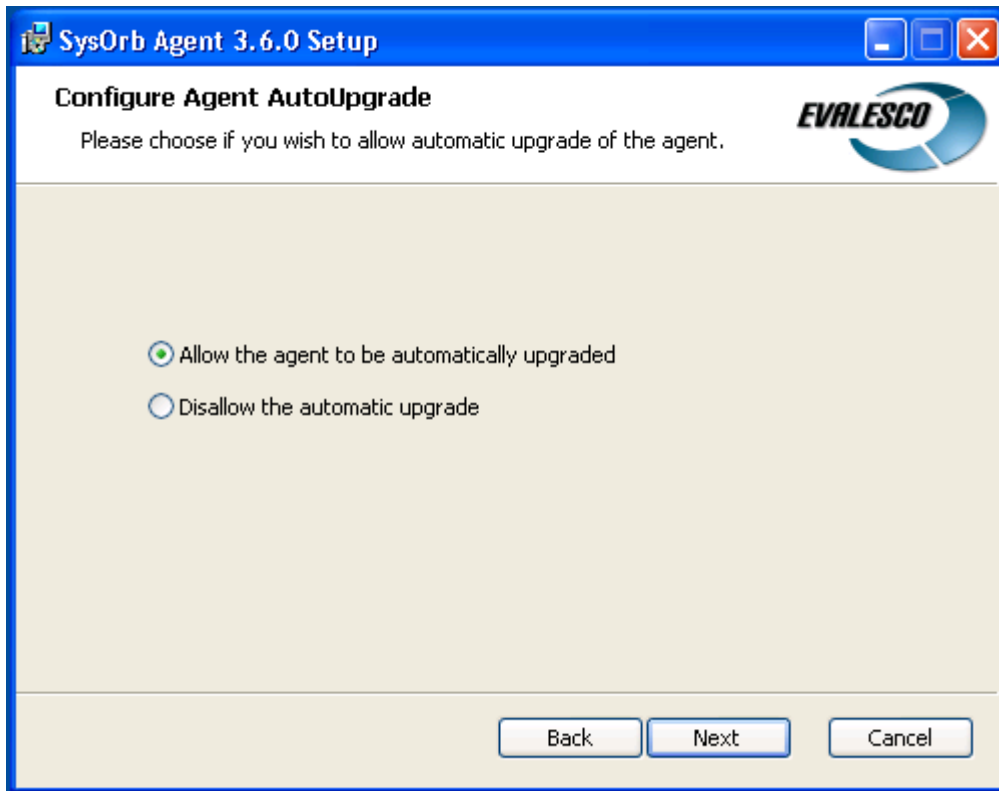
SysOrb Agent Name

This field specifies what name the Agent will use when checking in to the SysOrb Server. Before you install the Agent, you should have created a Node on the SysOrb Server, for the agent. Use the same name in both places. It is common to use the DNS-name for the machine.

SysOrb Agent Domain

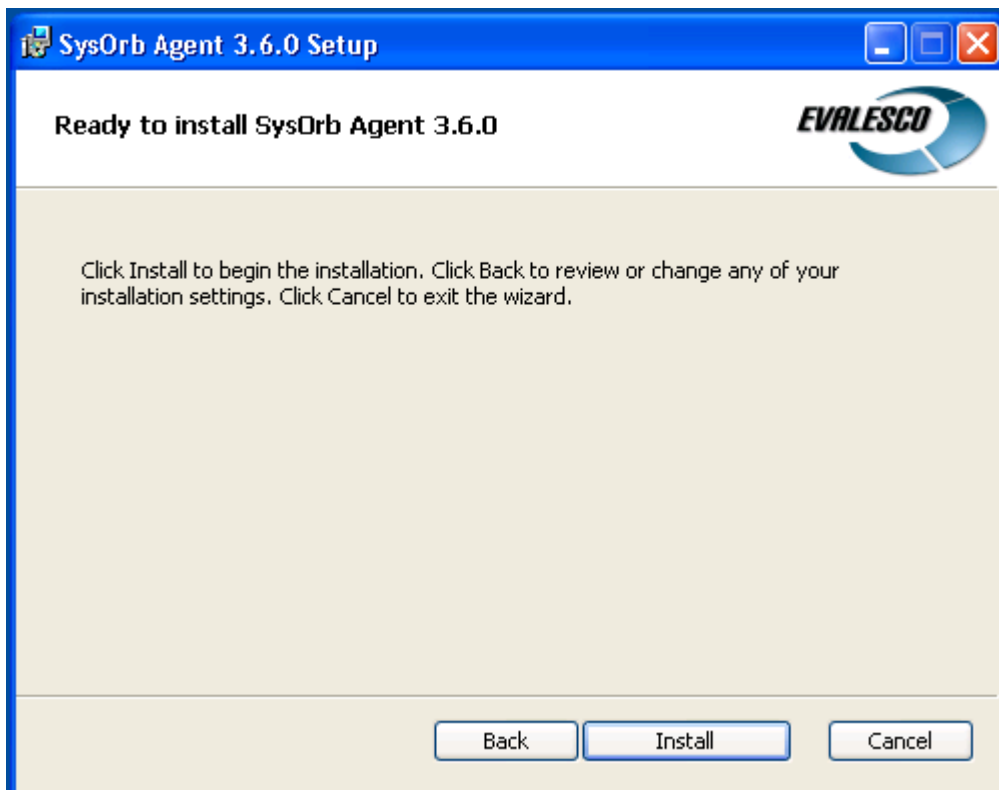
This field indicates where in the Domain hierarchy on SysOrb Server, this Agent is located (Domain here refers to a SysOrb domain, not to be confused with a DNS-domain name, or a Windows NT domain). For example if the hierarchy on the SysOrb Server is structured according to geographical locations, the domain could be "France.Paris.Servers". On the SysOrb Server, the Agent-node should be placed in the "Servers" sub-domain to "Paris", which is a sub-domain to "France". If you want the Agent to be placed in the "Root domain", then leave the field blank, or insert a "." (period). The Auto Configure will attempt to fill out the SysOrb Server list, and the Agent name automatically, by scanning for SysOrb Servers. The Test Connection will verify the settings, and report any problems.

When filled in properly, please click Next to continue.

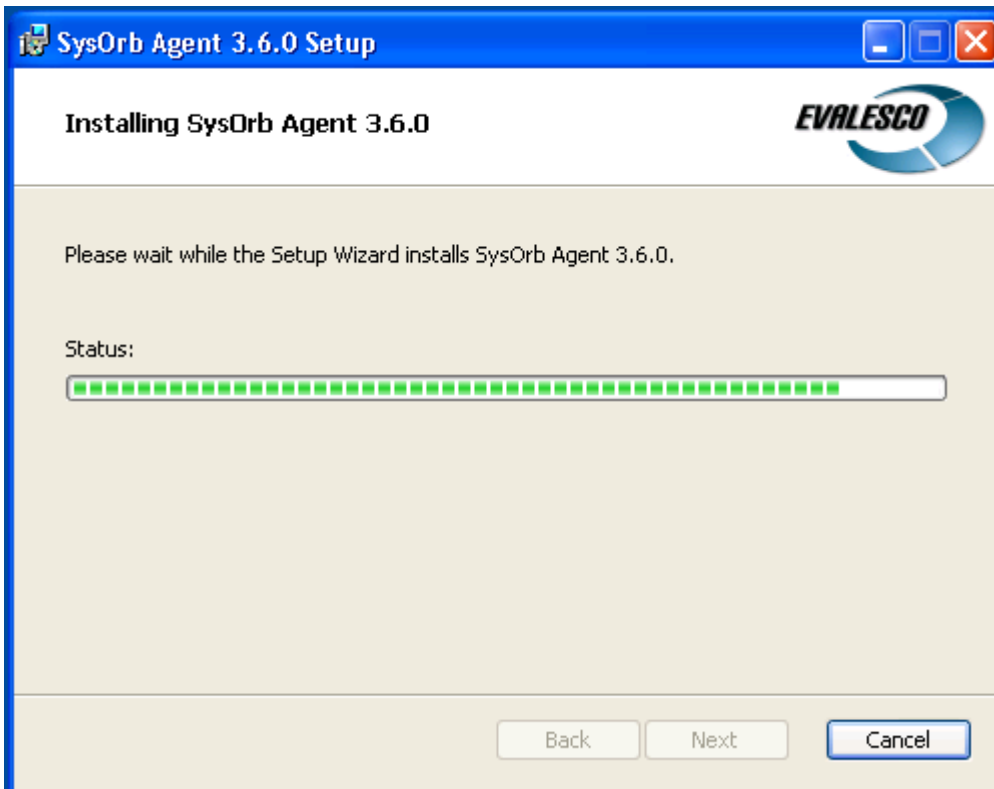


The SysOrb Server can automatically upgrade the Agents that check in to it, to new versions, provided it has been allowed in the individual Agent's configuration. This feature allows for very easy maintenance of the entire SysOrb installation, without having to manually upgrade the SysOrb Agents.

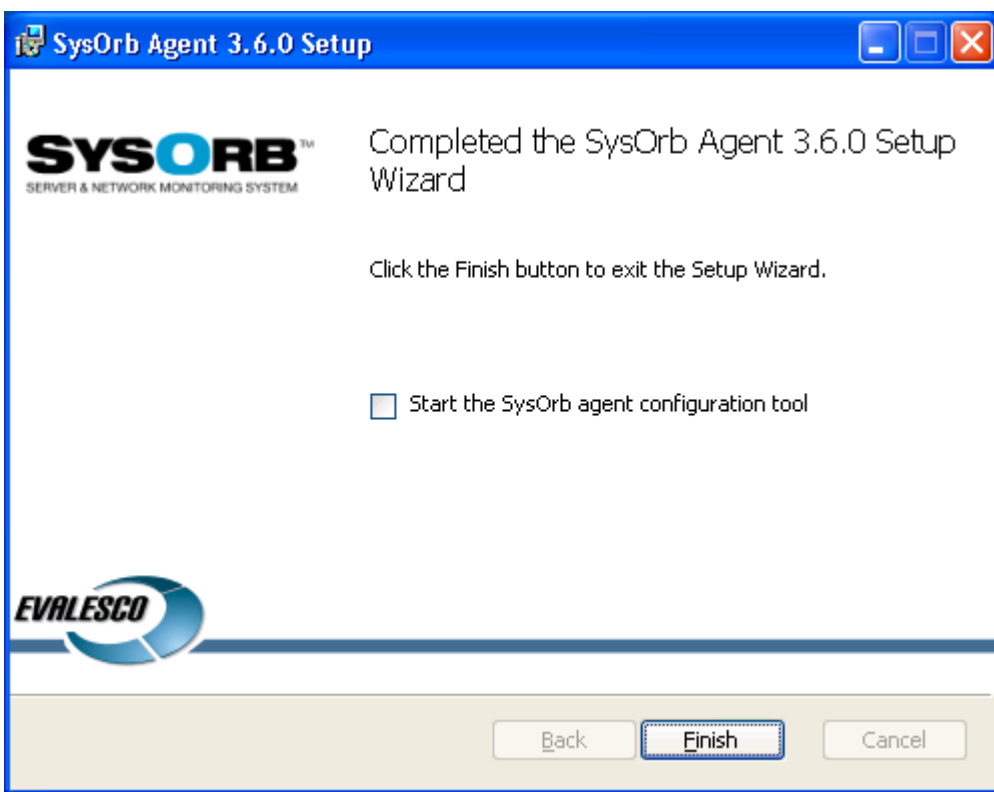
Unless you have very specific reasons to not allow auto-upgrade, we recommend that you enable the feature.



Click Install to start the installation.



The SysOrb Agent will now be installed.



Unless you need to further configure the SysOrb Agent, e.g. with CustomCheck scripts etc., just click Finish. The SysOrb Agent service will then be started and – provided the SysOrb Server is installed, configured and running - start to checkin to the SysOrb Server.